

YEAR 2005 HIGHLIGHTS

FABRICATION

- Designed ,manufactured & supplied the coal hopper and conveyors for an 18MW coal fired boiler for a McCains Foods plant in Northern China.
- Fabricated & supplied 4 diffusers weighing 6 tonnes each for the Waimakariri wastewater ocean pipeline.
- Fabricated pumphouse pipework weighing 63 tonnes and 5 large air receivers weighing 54 tonnes for the Black Point irrigation scheme at Kurow.
- Manufactured several towers and components for cell phone sites around the South Island.



Air receivers – Black Point irrigation scheme



Magic Carpet installation – Mt Hutt

SKI LIFTS

- Supported Leitner Poma with the installation of two 6 seater detachable lifts at Coronet Peak and at Mt Hutt and the relocation of a 4 seater fixed grip chairlift at Mt Hutt.
- Manufactured & installed a 140 metre long Magic Carpet ski conveyor at the Mt Hutt skifield.

GUARDWAY

- Manufactured & installed further aluminium stairs & walkways for a Christchurch tyre manufacturing plant.
- Manufactured & supplied aluminium platforms for the stainless steel milk silos at the Westland dairy plant.
- Manufactured & supplied aluminium walkway systems for several industrial plants including food processing and waste water treatment plants.



Guardway stairs – Manukau waste water plant

www.lytteng.co.nz

YEAR 2005 HIGHLIGHTS

MARINE

- Carried out 30 major surveys and refits in the dry dock including 4 double dockings.
- The combined length of one of the double dockings of 2 Korean trawlers was the longest in the history of the dry dock.



Janus & Avro Chieftain – Lyttelton dry dock

BOILERS

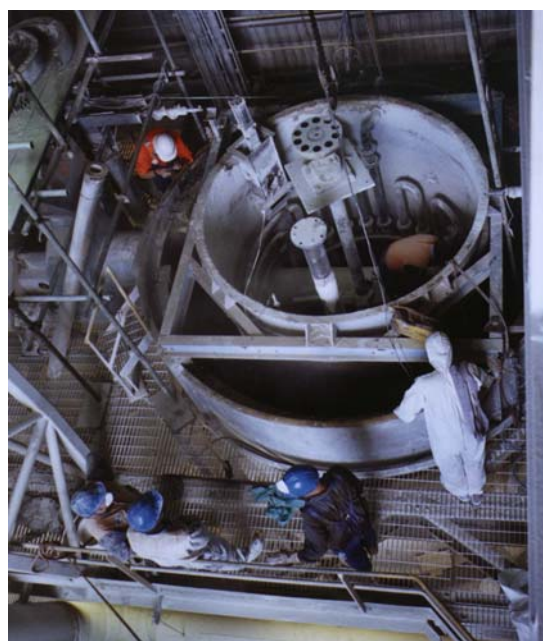
- Completed & installed a 3MW fire tube waste wood fired boiler for a Christchurch timber veneer plant.
- Manufactured & supplied a 4MW under fired waste wood steam boiler for Fiji Foods in Suva.
- Designed & installed a new control system for a 4MW oil fired boiler at a Christchurch packaging plant.



3MW Wood Fired Boiler – Gunns Veneers

INDUSTRIAL

- Carried out a major upgrade of the dryer at a Christchurch gelatine plant, working 24hrs a day to complete the work during a week long shutdown.
- Manufactured & installed a replacement oil fired kettle weighing 5 tonnes for a Christchurch wall board plant.
- Undertook extensive maintenance during the annual shutdown for a Christchurch fertiliser plant.
- Carried out major surveys on the iwells & boilers for a meat processing plant.



Kettle removal – Winstones Wallboards