

YEAR 2004 HIGHLIGHTS

FABRICATION

- Manufactured 50 tonnes of brackets and stainless bolts for the seismic strengthening of several south island highway bridges.
- Fabricated & installed 4 cellular towers and numerous antennae mounting frames for sites around the south island.
- Fabricated a 4 tonne hopper for storing bulk carbon & 4 steam heated platens for a tyre manufacturing plant.
- Completed the welded assembly of 2 13 tonne panel press frames comprising of 50mm thick plates for a machinery manufacturing company.



Panel press – assembly welding



Detachable quad lift – Cardrona Ski Field

SKI LIFTS

- Supplied & installed a Poma detachable quad chairlift for the Cardrona ski field with 16 towers & crossarms and 89 chairs.
- Manufactured 12 intermediate sections to extend a Magic Carpet ski conveyor previously supplied to a Japanese ski field.

GUARDWAY

- Manufactured & installed extensive aluminium platforms & hand railing for a tyre manufacturing plant.
- Manufactured & supplied aluminium ladders & walkway systems for roof access & silo access for several industrial plants including bakeries, breweries and milk processing plants.



Platform trial assembly in workshop



LYTTELTON ENGINEERING

www.lytteng.co.nz

YEAR 2004 HIGHLIGHTS

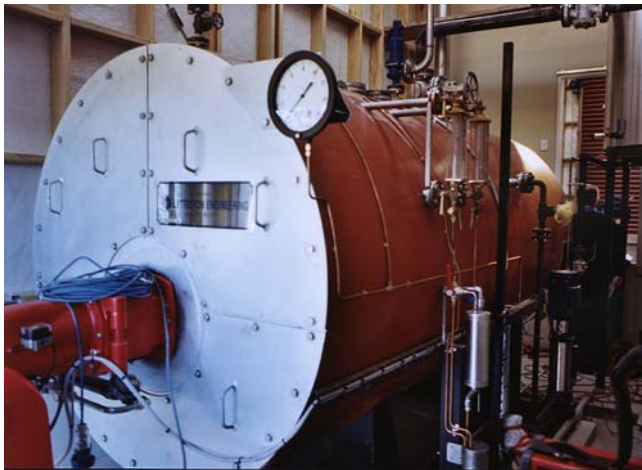
MARINE

- Carried out 27 major surveys and refits in the dry dock including 6 double dockings.
- Removed and transported the 14 tonne prop shaft from the Russian Trawler, Malakov Kurgan to the workshop for refurbishment. This is the largest shaft to date that has been worked on outside the dry dock.



Prop Shaft Repairs – Malakov Kurgan

BOILERS



1.2MW Lpg Fired Boiler – Air NZ Engine Centre

- Manufactured & installed a 1.2MW lpg fired boiler for Air NZ at the new Christchurch engine maintenance facility.
- Carried out major structural repairs to a 2.5MW wood fired boiler at a Christchurch timber veneer plant after serious cracking was discovered.
- Commenced the manufacture of a replacement 3 MW fire tube boiler for the above plant.

INDUSTRIAL

- Removed & replaced 7 3 tonne steam heated dryer sections from 5 levels up in the powder drying tower at the Clandeboye milk processing plant.
- Installed a platform & gate system for the safe loading of pallets into 3 first floor openings, at a Christchurch chemical production plant.
- Relocated machinery & installed a large replacement cooling tower at a Christchurch bottling plant.
- Carried out major surveys on the iwells & boilers for a meat processing plant.



Dryer installation – Clandeboye Plant



LYTTELTON ENGINEERING

www.lytteng.co.nz