

YEAR 2002 HIGHLIGHTS

FABRICATION

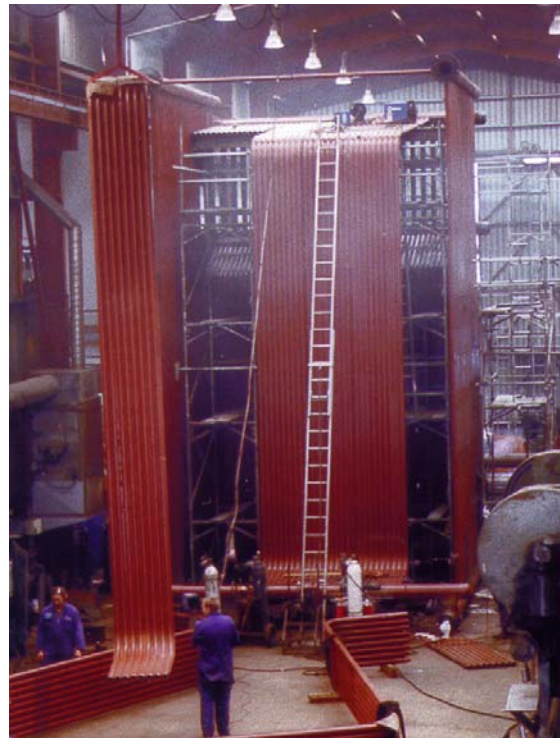
- Manufactured a prototype wharf mounted ship mooring unit for Mooring Systems Ltd.
- Manufactured & installed 6 towers for cell phone sites in Dunedin & Christchurch, including one 40 metres high with a mass of 14 tonnes.
- Fabricated 4 penstock transition sections for the Coleridge hydro power station.



Wharf mounted ship mooring unit – Mooring Systems

BOILERS

- Assembled the furnace & convection pass for the largest coal fired boiler in the South Island for installation at a milk processing plant in Southland.
- Built & installed a 14 MW coal fired boiler at a food processing plant in Timaru.
- Carried out a major upgrade & conversion to unattended operation of a 4 MW wood waste fired boiler for a timber processing plant.



35MW coal boiler – Edendale Milk Products



LYTTELTON ENGINEERING

www.lytteng.co.nz

YEAR 2002 HIGHLIGHTS

MARINE

- Carried out 25 major surveys and refits in the dry dock including 2 double dockings and 1 with significant hull repairs.
- Carried out extensive modifications and installed a waste heat boiler & meal plant in the trawler Independent 1.



Boiler installation –Trawler Independent 1

INDUSTRIAL

- Fabricated & installed extensions to the aeration & sludge pipework systems at the Bromley wastewater treatment plant.
- Manufactured & installed the ductwork & associated steelwork for a new absorption tower at a fertiliser plant.
- Carried out major surveys on the iwells & boilers for a meat processing plant.



Sludge pipework – Bromley Wastewater Plant



LYTTELTON ENGINEERING

www.lytteng.co.nz